



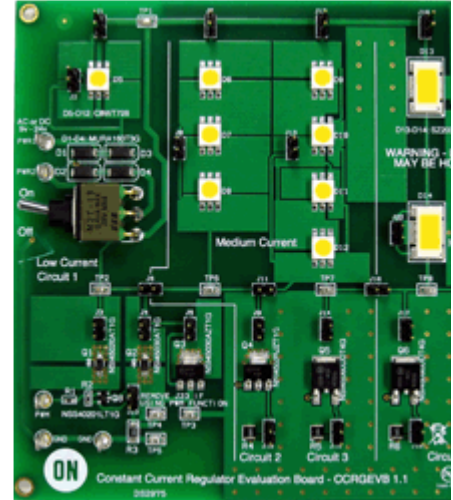
- ▼ Design Support
 - ▶ Technical Documentation
 - ▼ Design Resources

Home > Support > Design Support > Design Resources > Evaluation Boards

CCRGEVB:CCR ARRAY EVAL BOARD

Evaluation Board Description

The CCRGEVB is an evaluation board used to demonstrate some very simple, elegant, and cost effective solutions using ON Semiconductor's Constant Current Regulator. The board is divided into four general circuits, and contains 7 CCR's. There is also a LowVce BJT with two 4.7 kΩ resistors for PWM dimming. Also included is a 1 Ω current sense resistor.



- Design & Development Tools
- Evaluation Boards**
- Evaluation Board Documents
- Sample Kits
- Product Recommendation Tools
- Simulation Models
- Software
- Video

▶ Technical Support

Evaluation Board Information

Evaluation Board	Status	Pb-free	Short Description	Parts Used	Action
CCRGEVB	Active		CCR ARRAY EVAL BOARD	NSI45020AT1G, NSI45030AT1G, NSI45030AZT1G, NSI45035JT1G, NSI45060DDT4G, NSI45090DDT4G, NSS40201LT1G	Buy Now Contact Sales Office Inventor

Technical Documents

Type	Document Title	Document ID/Size
Eval Board: BOM	CCRGEVB Bill of Materials ROHS Compliant	CCRGEVB_BOM_ROHS.PDF - 94.0 KB
Eval Board: Gerber	CCRGEVB Gerber Layout Files (Zip Format)	CCRGEVB_GERBER.ZIP - 160.0 KB
Eval Board: Schematic	CCRGEVB Schematic	CCRGEVB_SCHEMATIC.PDF - 56.0 KB
Eval Board: Test Procedure	CCRGEVB Test Procedure	CCRGEVB_TEST_PROCEDURE.PDF - 174.0 KB